

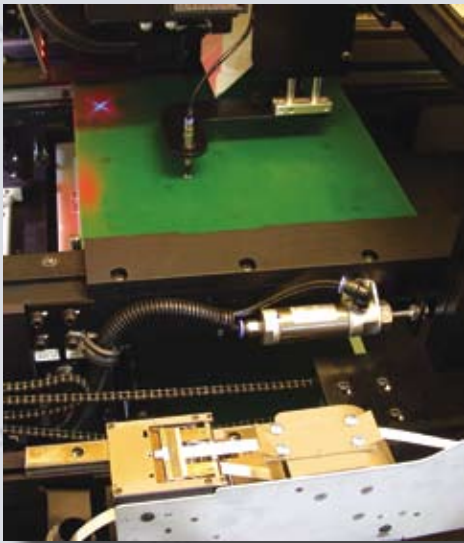


g3 HIGH SPEED PLATFORM

LABEL APPLICATOR SYSTEMS

Applications:

- Place directly on PCB
- Place directly on housing
- Place directly on component
- Place preprinted labels



CTI Systems Label Applicators

The CTI Label Marking System is a high speed, operation friendly, label applicator system totally integrated for the printed circuit board assembly process. The g3 Platform offers the reliability and innovation that has made CTI systems / Conveyor Technologies the preferred supplier to today's leading manufacturing companies. The g3 Label Marking System is capable of operating with any printer or custom Conveying media which allows this system to function seamlessly and reliably in and manufacturing environment. Label Marking Technology and CTI Systems are a smart combination.

5313 WOMACK ROAD SANFORD, NC 27330 / OFFICE: (919) 776 - 7227 - FAX: (919) 774 - 3097
www.conveyor-technologies.com

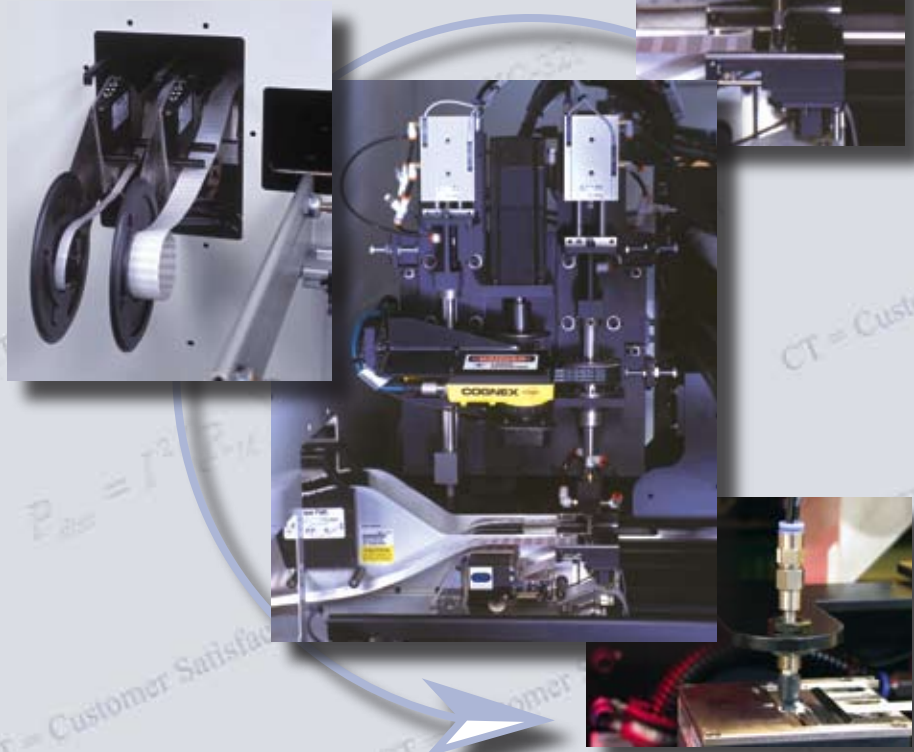
LABEL APPLICATOR SYSTEMS

STANDARD FEATURES:

- Thermal Transfer Printer:
 - Optional Models;
 - DataMax 14604
 - ID Technologies 250
 - Intermec (EZcoder 3240)
- TYPICAL PRINTER FEATURES;
 - 600 Dots Per Inch
 - 4.16" Maximum Print Width
 - 4.65" Maximum Media Width
 - Coated Side Out Ribbon Supply
 - RS-232 Serial and Centronics Parallel Interfaces
 - Front Panel LCD Display
 - Standard Memory; 16 MB RAM
 - Flash Upgradeable Firmware
 - DMX- 100 Internal Ethernet Interface
- Cycle Time:
 - Application Dependant
 - Dual Nozzles; 1.9 Second Cycle Time
- Placement Capacity:
 - X & Y Automatic Gantry
 - 18" X 20" Platform (Std. in single head configuration)
 - High Speed Servo
 - Pneumatic Z Axis
- Conveyor Features:
 - 1 Meter
 - 1 Section (Multiple Sections Optional)
 - Lift and Clamp Conveyor Rails (Z Axis)
 - 6.35 mm Edge Belt
 - Steel Welded Frame
 - Left to Right Flow
- Nozzle Features:
 - Single Nozzle (Standard)
 - See Nozzle Configurations

NOZZLE CONFIGURATIONS:

- Single 0 to 90 degree rotation
- Single Incremental Theta
- Dual Non Rotating
- Dual 0 to 90 degree rotation
- Dual Incremental rotation



CTI Easy Teach Software:

Standard Controls:

- PLC Controls with SMEMA interface (Standard)
- Programmable Positions (up to 2000 programmable positions)
- 10 Inch LCD Display Monitor
- Capable of printing
 - Alpha Numeric Text
 - 1D code 3 of 9 or Code 128
 - 2D DataMatrix (Fixed Data per Program, serial number increment only)

Optional:

- PC Based Controls
 - 15" Monitor w/keyboard
- Operator Options:
 - Begin w/new Serial Number
 - Begin from Last
 - Teach new program



LABEL APPLICATOR SYSTEMS

MISSION STATEMENT CUSTOMER SATISFACTION

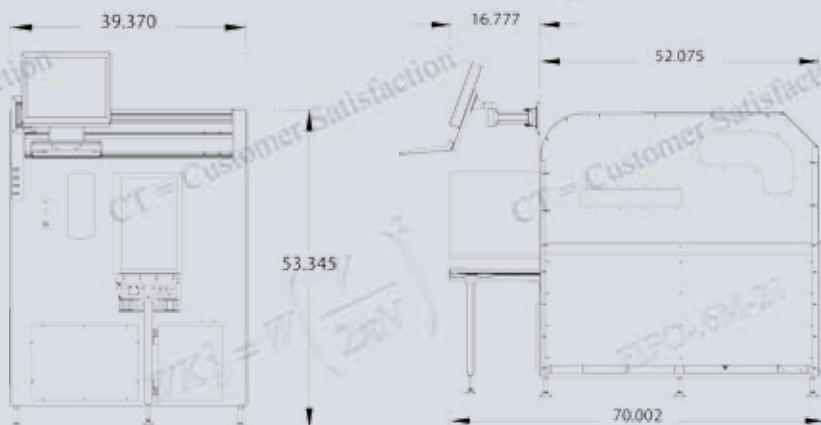
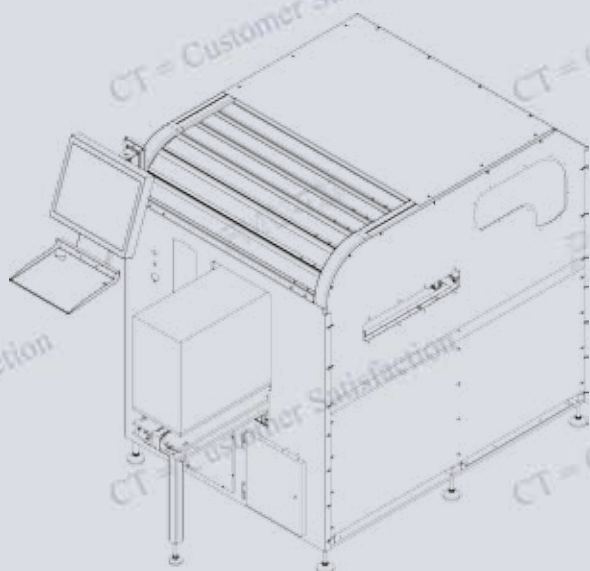
“whatever it takes”

Accessories/Options:

- Bar Code Reader (MicroScan Quadrus EZ, or Equivalent)
- Small Label .20 X .20”
- Light Tower
- Auto width Adjust
- 18 x 20”, 24 X 28” PCB
- Custom Paint

STANDARD SPECIFICATIONS:

- PCB Size: _____ Min. 2” X 4”
_____ Max. 16” X 18”
- PCB Height: _____ 37.5” + / - 2”
- Edge Clearance: _____ .100” from edge of PCB
- Air Requirements: _____ .8 cfm @ 65 PSI
- Power Requirements: _____ 20 amps @ 220VAC
- PCB Max Weight: _____ 10 lb.
- PCB Min. Thickness: _____ .010”
- PCB Max. Thickness: _____ .180”



5313 WOMACK ROAD SANFORD, NC 27330 / OFFICE: (919) 776 - 7227 - FAX: (919) 774 - 3097
www.conveyor-technologies.com