

MANUAL SERVO PRESS WORKSTATION

CUSTOMER SATISFACTION.....“Whatever it takes”

PRESS DESCRIPTION

The Servo Press Workstation allows precise control of the press operating parameters (Force, Distance and Speed) as a self contained ergonomic solution.

Both force curve and SPC control graphs are displayed for the current product being processed.

Data for all products are stored in a database and sent to facility mainframe on demand.

Product recipes (programs) are entered with Pass/Fail characteristics. At the end of each cycle the system displays and records pass/fail information.

Semi-Automatic and Automatic add on peripherals are available.

STANDARD FEATURES

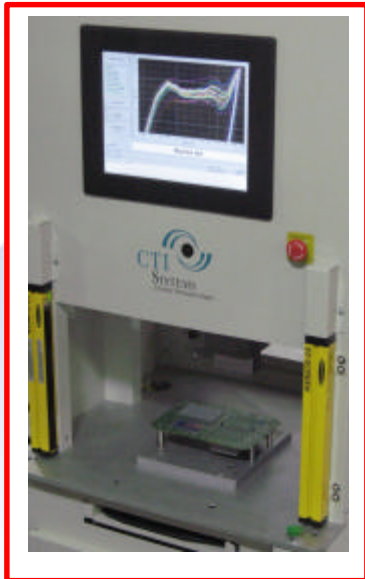
- 15 inch touch screen operator interface
- Force and SPC graphs shown of product in-process
- Unlimited storage of product profiles
- Display current production run Quantities
- Process stops with unexpected press force at distance
- Windows based PC software
- Bar code ready
- Programmable hold time
- Light curtains for operator safety



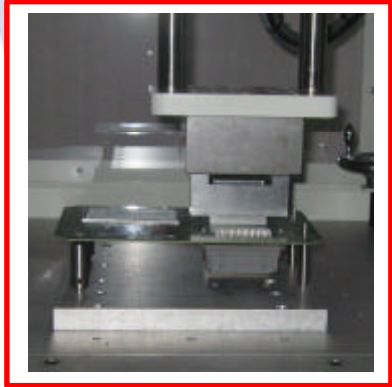
PRESS PLATE



EASY LOAD /UNLOAD



TOOLING FIXTURES



MANUAL SERVO PRESS WORKSTATION

CUSTOMER SATISFACTION.....“Whatever it takes”

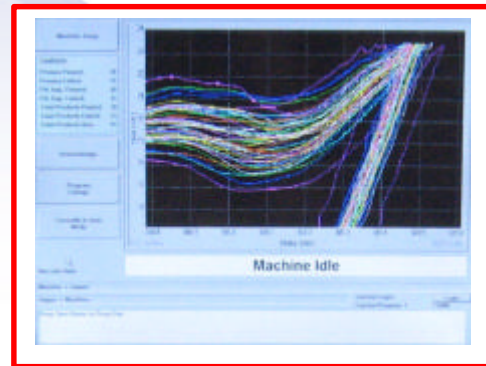
Features for 20" window	MP12-20	MP32-20	MP55-20	MP80-20	MP110-20
Force KN / Tons	12 / 1.3	32 / 3.6	55 / 6.2	80 / 9	110 / 12.3
Footprint (W" x D" x H") (in)	28x25.5x78	28x25.5x82	28x25.5x84	28x25.5x86	28x25.5x92
Ram Stroke (in)	5.5	5.5	5.5	5.5	5.5
Vertical Tooling / Product Area (in)	11.5	11.5	11.5	11.5	11.5
Ram Approach Speed (in/sec)	3	3	3	3	3
Ram Press Speed- Programmable	.1-3 in/sec	.1-3 in/sec	.1-3 in/sec	.1-3 in/sec	.1-3 in/sec
Drive Type	Screw	Screw	Screw	Screw	Screw
Accuracy (in)	0.0002	0.0002	0.0002	0.0002	0.0002
Repeatability (in)	0.0001	0.0001	0.0001	0.0001	0.0001
Tooling surface on Ram (W" x D")	6.5x4	9 x 5	9 x 5	10 x 6	10 x 6
Max Product width accepted (in) *	20	20	20	20	20
Throat Depth (behind Ram) (in)	14.5	14.5	14.5	14.5	14.5
Machine Front to Press center (in)	10.5	10.5	10.5	10.5	10.5
Force, Speed, SPC Graphing	std	std	std	std	std
Safety Light Curtains	std	std	std	std	std

CHART NOTES:

- 1) Footprints are without extended front Table Top option
- 2) Ram strokes available up to 20 inches
- 3) Higher Ram Approach speeds Available
- 4) Tooling Surface should be centered (80% of Load) on ram
- 5) Deeper throat depths available
- 6) Machine Front to press center increases with optional Front Table Top

* 24" and 36" Product Windows Optional

SOFTWARE



SPECIAL NOTES:

- (TS) Top & Bottom Press Tooling Set
- (TSET) Top & Bottom Tooling set w/ Electrical Pin Check
- (PTF) Press-Thru fixture
- (HC) Hand crank (x-axis) Top Tooling Position
- (PTT) Programmable Position Top Tooling (x-axis)
- (FS) Bar Code Scanning - Fixed Location - (2D)
- (HS) Hand Held Bar Code Scanner
- (MPxx-24) 24" Product Window
- (MPxx-36) 36" Product Window
- (LT) Light Tower w/ alarm
- (TT) Deeper 1/2" thick Alum Table Top w/ support brackets

PART NUMBER CONFIGURATION

MP(Force)-(Window width)-(options)-(options)

MP= Manual Press
 SAP= Semi-Automatic Press
 AP= Automatic Press